

di Leonardo da Vinci

**RR HOLLAND**  
GEAR TECHNOLOGY

**NEWSLETTER**  
THE LATEST NEWS ABOUT RR TRANSMISSION GEARS



## Introduction

RR Holland was founded more than fifteen years ago as a manufacturing establishment of Reggiana Riduttori Srl., worldwide authority in the field of transmission gears. Our company is responsible for the sales, assembly and servicing of Reggiana Riduttori planetary gears in the whole of the Benelux.

We have accumulated a wealth of knowledge and experience within our company, allowing us to develop a wide range

of products for various applications. RR Holland can deliver promptly, as we have a considerable number of main modules in stock and can configure them to suit individual clients. RR Holland is known as a specialist, who promptly supplies suitable answers to technical questions, and whose prices, moreover, are competitive. Your transmission problem deserves a prompt *and* reliable solution: our team is at your service.

## Reggiana Riduttori introduces the RR plus series

Reggiana Riduttori introduces the new series of planetary gears, the RR plus. The RR plus series will be available from mid-December. The new series was developed to meet the increasingly high requirements demanded by the market.

The RR plus series offers a number of improvements:

- **Better performance**  
(nominal torques from 25,000 to 560,000 Nm).
- **Greater flexibility**
- **Improved compactness and lightness**

The RR plus series contains two new types of gearboxes and five new angular drive units, making a total of thirteen different models available in linear as well as angular versions. The gears can be supplied with reductions from 1 : 4 to 1 : 2500. Moreover, all output shafts have been completely renewed. The complete programme with accessories for the output shafts has been renewed to complement the improved performance.

The current Series 2000 programme, with nominal torques from 650 Nm to 21,000 Nm, will soon be adapted and added to the RR plus program.

A next edition of this newsletter will contain further information on this subject.





## Track drives Reggiana Riduttori now even *more* compact and efficient

Reggiana Riduttori has discovered a way to make its track drives even *more* compact and efficient, whilst maintaining technical specifications.

The improvement was made possible by its many years of experience in manufacturing planetary reduction gears. The modifications, as well as expansion of the programme, constitute a response to market developments.

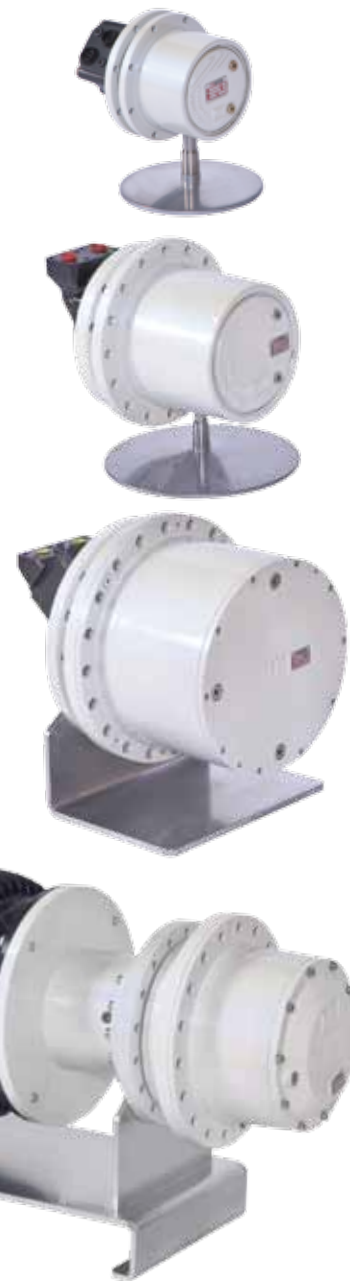
The RRTD programme currently comprises twelve different types of track drives, from 1,000 Nm to 50,000 Nm. Further expansion in the RRTD programme is expected, in order to meet market demand.

The track drives are supplied with a negative multiple disc brake, whose holding torque corresponds to the reduction ratio and the maximum torque. The different types also offer a choice as to reduction ratio: from 1 : 5 to 1 : 180.

The track drives are suitable for fitting with orbital or plunger hydromotors produced by various manufacturers. The short or cartridge hydromotors in particular are applied to guarantee the compactness of the entire drive units.

### Specialist knowledge

RR Holland adapts reduction gears entirely in-house, when 'standard' is not an option for customers. Thanks to the specialist knowledge present within the company, RR Holland is also able to undertake such modifications for track drives, so that track drives can now also be used in combination with an electric motor. Combinations with an angular unit are also possible. Solving such problems represents daily routine work for specialists like us.



Why does the eye see a thing more clearly in dreams than the imagination when awake?  
Leonardo da Vinci



**RR HOLLAND**  
GEAR TECHNOLOGY

Energieweg 34  
P.O. Box 288  
4900 AG Oosterhout (NB)  
The Netherlands

Phone: +31 162 45 63 97  
Fax: +31 162 45 80 22  
Email: [info@rrholland.nl](mailto:info@rrholland.nl)  
Internet: [www.rrholland.nl](http://www.rrholland.nl)